



[www.pyaco.ir](http://www.pyaco.ir)

## Table of contents:

Dual Mag.....	4
Dual Mag technical data.....	6
Dual Mag Plus technical data.....	8
Dual Mag Plus.....	9
inhibitor (G <sup>n</sup> ).....	12
inhibitor (G <sup>8</sup> ).....	14

## Installation guide:

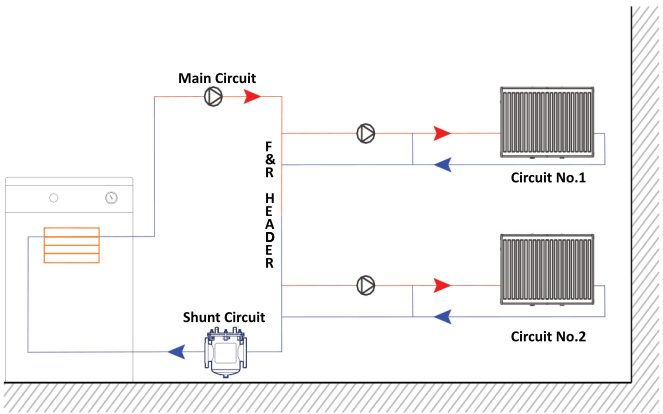
For more installation diagrams, please scan the following QR-code.

[www.pyaco.ir/dmp-installation-types](http://www.pyaco.ir/dmp-installation-types)

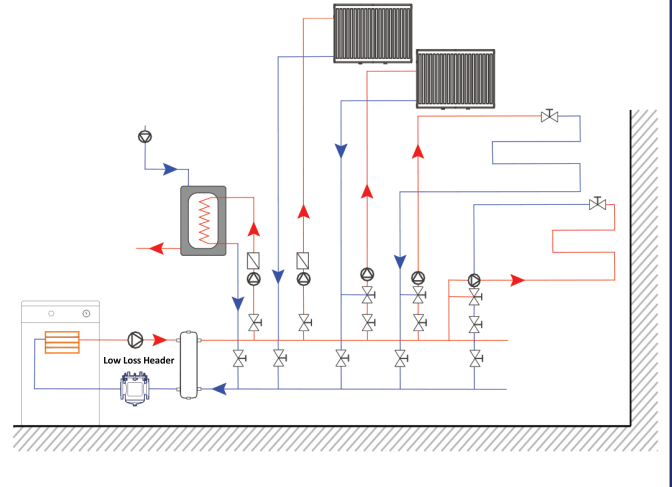


# Suggested installation positions for magnetic filters:

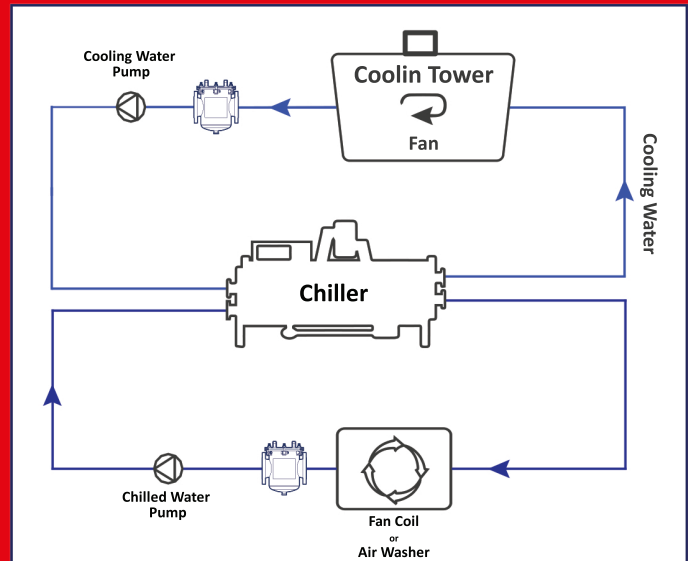
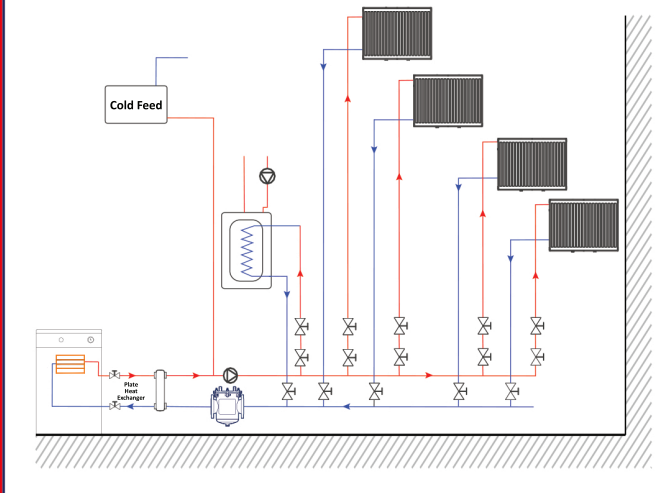
Cascade systems:



System with hydraulic separator:



Indirect systems with plate heat exchanger:



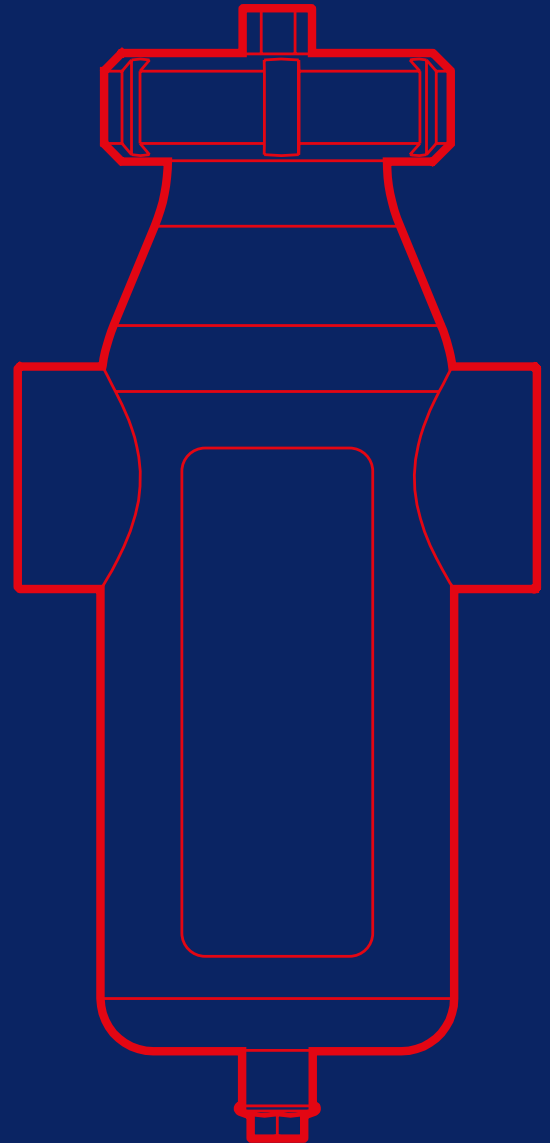
# dual Mag

Magnetite isn't just a domestic issue. In fact, the bigger the system, the bigger the problem. Our commercial filters are designed to protect heating/cooling systems. dual mag, central heating and cooling magnetic filter, protecting heating/cooling components from the damaging effects of sludge and debris. The dual design provides an opportunity to capture all impurities in two times of contact with the same magnet.

Thanks to it's design, it can be installed even vertical or horizontal.

dual mag is one of most powerful magnetic filters in the world, suitable for both cooling and heating in hydronic systems.

Dual Mag, represents the best solution for boiler rooms, to solve plant problems due to particle pollution, especially sand, magnetite and rust that are formed due to corrosion and scale during the normal operation of a system.

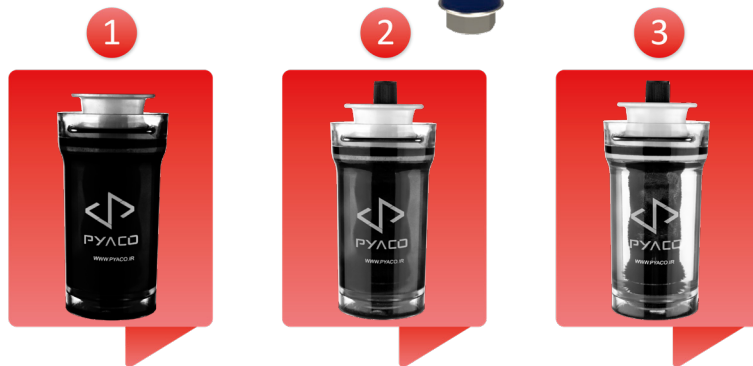


# Benefits:

- Optimized dual technology
- Removes all impurity (magnetic and non-magnetics)
- Fights corrosion
- Application in industrial, commercial and medium and largescale civil systems
- Maintains optimum system efficiency
- Limited overall dimension
- Reduce maintenance cost
- Max operating pressure: 10bar
- Max operating temperature: 90C

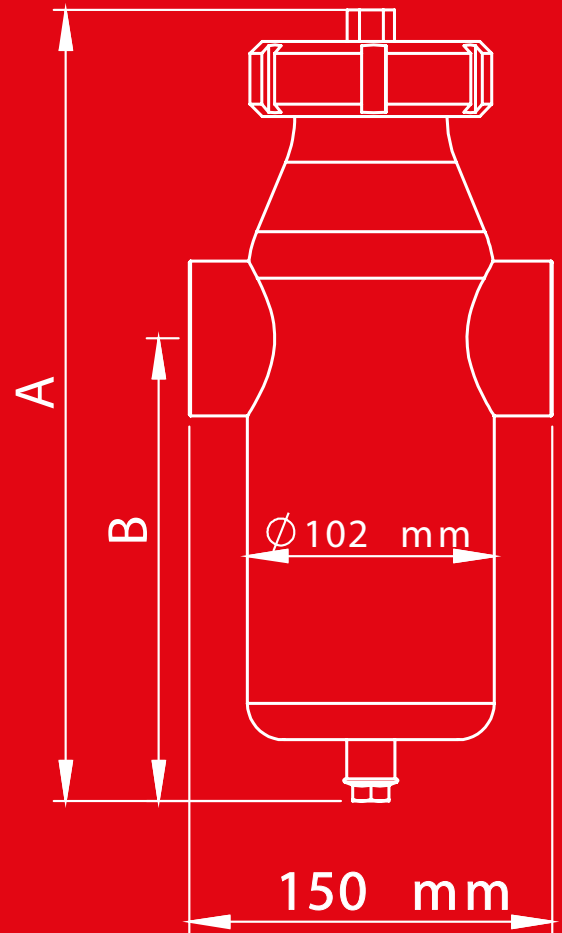
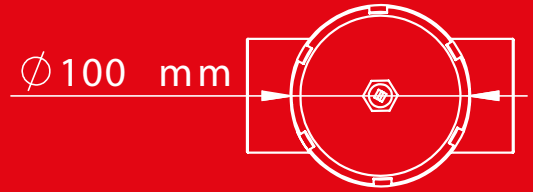
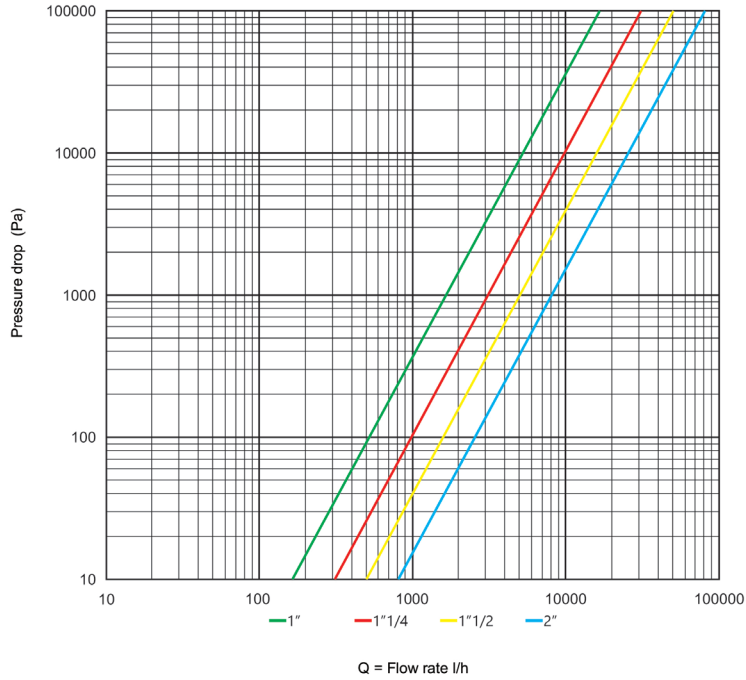


Order code	Connection type	Connection size
391011	Thread	1"
391012	Thread	1,1/4 "
391013	Thread	1,1/2 "
391014	Thread	2"
391015	Flange	DN40 (1,1/2 ")
391016	Flange	DN50 (2")



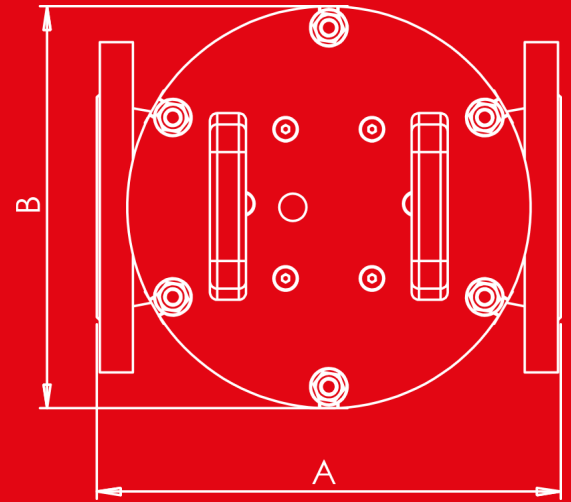
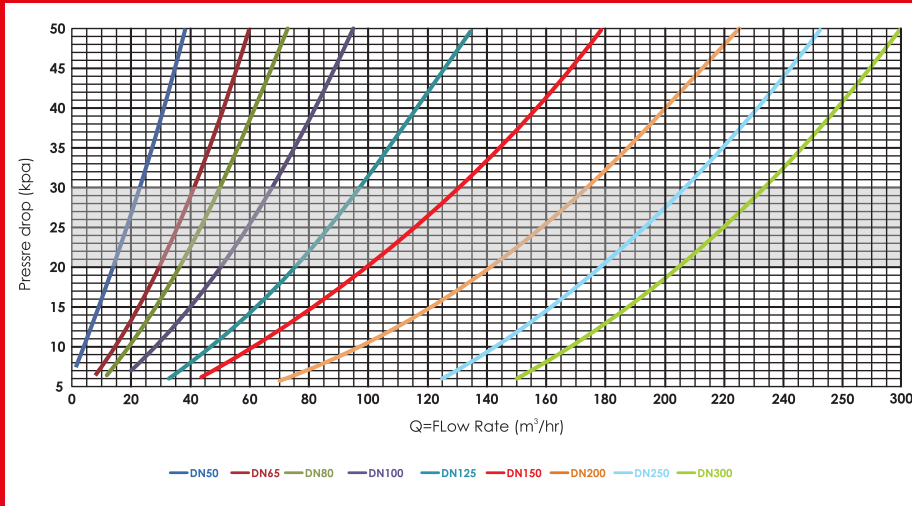
To view more, scan the following Qr code

# Dual Mag technical information

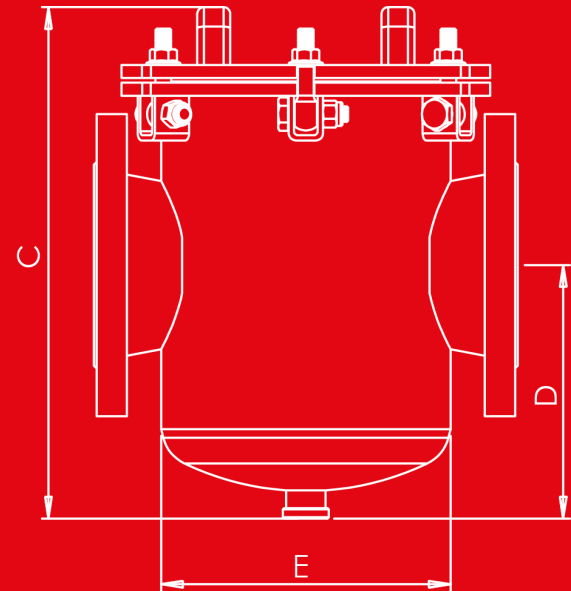


Dual Mag	A(mm)	B(mm)	kv(m <sup>3</sup> /hr)
1"	270	147	17
1,1/4 "	300	175	30
1,1/2 "	300	167	49.3
2"	300	192	79.8
DN40 (1,1/2 ")	300	167	49.3
DN50 (2")	330	192	79.8

# Dual Mag Plus Technical



Dual Mag PLUS	A (mm)	B (mm)	C (mm)	D (mm)	E (mm)	number of magnets	kv(m³/hr)
DN50	240	220	280	125	170	4	14-23
DN65	290	220	320	150	170	4	30-42
DN80	320	280	330	160	220	6	37-50
DN100	345	280	395	195	220	6	50-67
DN125	400	335	450	225	275	8	75-94
DN150	475	385	500	260	325	8	100-131
DN200	600	385	580	290	325	10	142-173
DN250	730	540	580	290	457	17	178-207
DN300	850	540	640	330	457	17	205-233



# dual Mag Plus

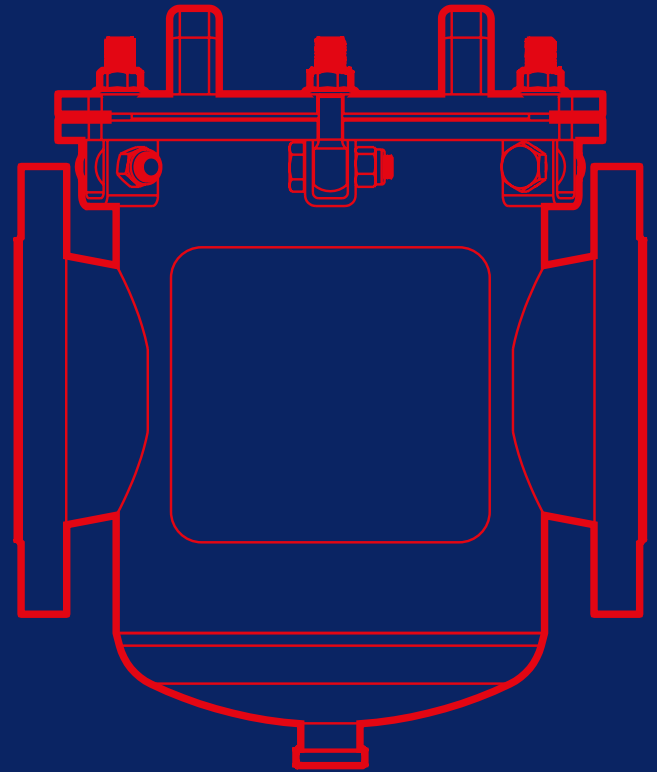
Magnetite isn't just a domestic issue. In fact, the bigger the system, the bigger the problem. Our commercial filters are designed to protect heating/cooling systems.

dual mag plus, Central heating and cooling magnetic filter, protecting heating/cooling components from the damaging effects of sludge and debris. Furthermore, magnetic filters will reduce energy consumption and CO2 emissions.

The dual design provides an opportunity to capture all impurities in contact with all length magnet. With inside mesh filter, non-magnetic debris will be captured inside the filter.

Thanks to it's design, it can be installed even vertical or horizontal.

dual mag plus is one of most powerful magnetic filters in the world, suitable for both cooling and heating in hydronic systems.

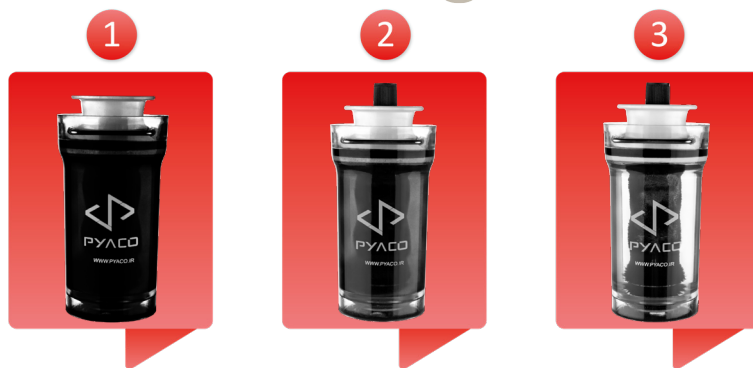
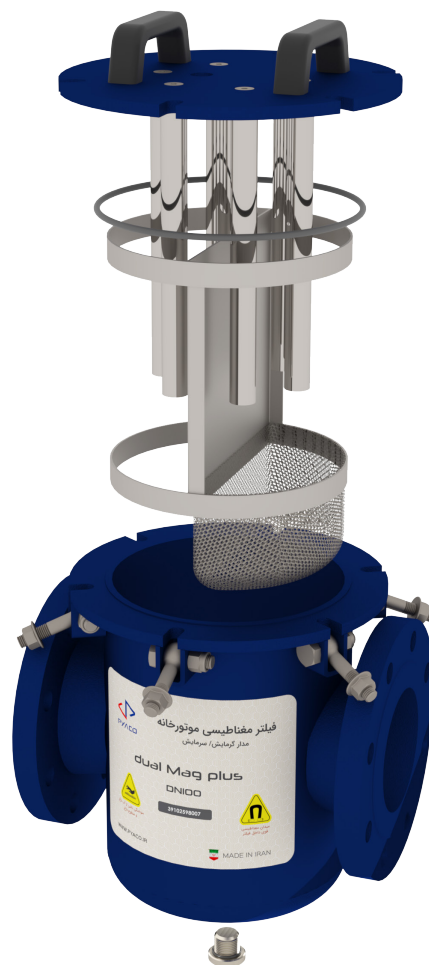




# Benefits:

- Optimized dual technology
- Removes all impurities
- Fights corrosion
- Application in industrial, commercial large-scale civil systems
- Maintains optimum system efficiency
- Limited overall dimension
- Reduce maintenance cost
- Horizontal or vertical installation
- Equipped with mesh filter
- Max operating pressure: 10bar
- Max operating temperature: 90C

Order code	Connection type	Connection size
391022	Flange	DN50 (2")
391023	Flange	DN65 (2,1/2 ")
391024	Flange	DN80 (3")
391025	Flange	DN100 (4")
391026	Flange	DN125 (5")
391027	Flange	DN150 (6")
391028	Flange	DN200 (8")
391029	Flange	DN250 (10")
391030	Flange	DN300 (12")



To view more, scan the following Qr code





# Inhibitor G<sup>1</sup>

85% of the problems in heating/cooling systems, in the closed circuits are because corrosion inside the system.

By injecting G1 inside closed circuits, corrosion will be stopped completely.

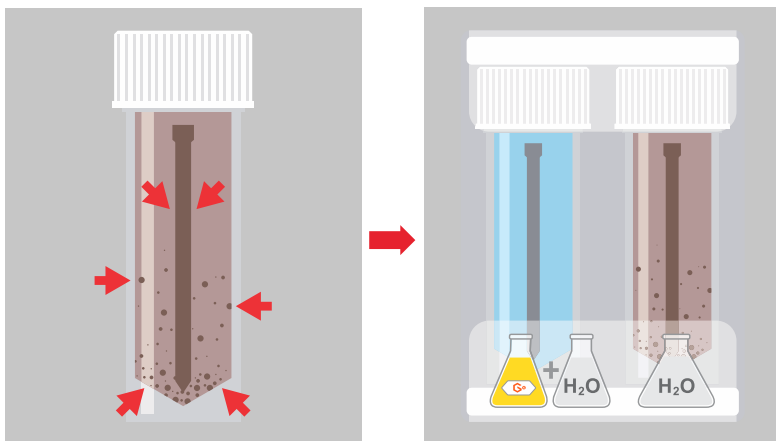
G1 is the faster way to prevent corrosion and protect central heating from debris. Its pressurized can, means the heating treatment can be added via a radiator, air vent or boiler filling loop in as little as 20 seconds, meaning its protection gets to work quicker.

This product is in two version, 1<sup>st</sup> is in 300ml pressurized can and 2<sup>nd</sup> is in 1.8L bottle.



## Benefits:

- Protects against corrosion and scale
- Stop all types of corrosion on all of metal types in the system
- Good for all types of water (soft to hard water)
- Able to inject into closed circuit without shut down or drainage
- Helps maintain the central heating's efficiency
- Balance the pH inside the system
- Extends the central heating system's lifespan
- Helps reduce heating costs and maintenance bills
- Available in 300ml pressurized can and 1.8L bottle



To view more, scan the following Qr code

# Cleaner

G3 gets to work on breaking down debris fast. Its powerful formula is designed specifically to clear all debris. And with a pressurized can, it can be added in 20 seconds and cleaning up magnetite and other sludge in an hour.

It will be dosed while normal operation of the system without any need of drainage and will be left inside the system till all debris be suspended inside the system and will be drained maximum after 3 weeks. After that, all the water inside the system should be drained and fresh water should be replaced. At that time, dosing G1 as an inhibitor is advised.

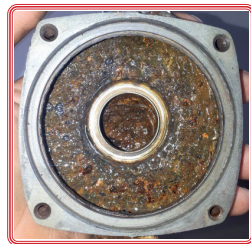


## Benefits:

- Removes sludge, debris and scale
- Restores heating efficiency
- Helps reduce heating and maintenance costs
- High performance chemical cleaner
- Highly concentrated formula
- Suitable for all heating systems
- Gets to work in an hour
- Can be left in the system for up to 28 days
- Available in 300ml pressurized can and 1.8L bottle



Before using G3



After using G3



To view more, scan the following Qr code



📍 Head Office: NO4, Sarmad Alley, North Sohrevardy street, Tehran, Iran

📍 Factory: NO1, 13th 24meter street, phase2, Yazd industrial town, Yazd, Iran

☎ +982191004030

✉ info@pyaco.ir

🌐 [www.pyaco.ir](http://www.pyaco.ir)